



RHINO CX Coupler - ChromX® Material

The CX Series of couplers is designed for use on ChromX® 4000 and 9000 Series of reinforcing steels. The CX series of mechanical couplers is designed to join any bar to bar connection that is the same size of rebar, where one bar is free to rotate. The coupler has machined taper threads at both ends connecting two ends of rebar to make a mechanical splice. This simplifies rebar splicing in areas where steel congestion makes it difficult for long lap splices. The taper thread design allows for quick alignment and engagement of the bar within the coupler.

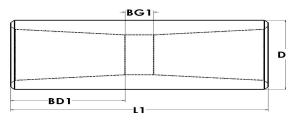


Features and Benefits

- ChromX.® 9000 material specifications provide for unique combination of strength and corrosion resistance
- Meets or exceeds requirements for ACI 318 Type 1 & Type 2 .
- Taper design allows for quick alignment and eliminates cross threading
- Installs quickly with taper thread
- Slim design frees up space in congested area
- Made from ASTM A1035 steel



Part Number	US Rebar Size	Metric Rebar Size	Canada Rebar Size	L1 (in)	L1 (mm)	D1 (in)	D1 (mm)	BD1 (in)	BD1 (mm)	BG1 (in)	BG1 (mm)	Weight (lbs)	Weight (kg)
CX13	#4	13mm	-	2.19	56	.75	19	.88	22	.43	11	.17	.08
CX16	#5	16mm	15M	2.50	64	1.00	25	1.10	28	.31	8	.2	.10
CX19	#6	19mm	20M	2.80	71	1.13	29	1.30	33	.20	5	.44	.20
CX22	#7	22mm	-	3.19	81	1.25	32	1.25	32	.69	17	.60	.27
CX25	#8	25mm	25M	3.39	86	1.50	38	1.50	38	.38	10	.88	.40
CX28	#9	28mm	30M	3.70	94	1.63	41	1.70	43	.31	8	1.20	.54
CX32	#10	32mm	-	4.25	108	1.75	44	1.87	48	.50	13	1.54	.70
CX36	#11	36mm	35M	4.57	116	2.00	51	2.18	55	.21	6	2.30	1.1
CX43	#14	43mm	-	5.35	136	2.25	57	2.50	64	.35	9	3.08	1.4



DIMENSIONS ARE FOR REFERENCE ONLY.